

Series L Mechanical Metering Pumps

Configuration Data

 Model **L 1 2 U** - **44**

Control Code
1 — Variable stroke length, 0 to 100%, (10% recommended minimum)
4 — Clutch actuated stroking mechanism. Pump responds directly to input signal via the IMI Current-to-Frequency Converter. Manually adjustable stroke length, 0 to 100% (10% recommended minimum)
8 — Clutch actuated stroking mechanism. Pump responds inversely to input signal via the IMI Current-to-Frequency Converter. Manually adjustable stroke length, 0 to 100% (10% recommended minimum)
7 — Clutch actuated stroking mechanism proportionally responsive to IMI Remote Programmable Flowmeter-Pulsar, manually adjustable stroke length, 0-100% (10% recommended minimum)

Output Code
1 — 35 GPH at 125 psi w/1725 REM Motor, 60 Hz or 110 L/H at 8.6 Bar w/1425 REM Motor, 50 Hz
2 — 70 GPH at 125 psi w/3450 REM Motor, 60 Hz or 220 L/H at 8.6 Bar w/2850 REM Motor, 50 Hz

Motor Code
U- — No motor, suitable for 1/4 HP, 1725 REM or 1/2 HP, 3450 REM NEMA (USA Standard) 56C Face mounting. Coupling supplied for 5/8" diameter shaft.
M- — No motor, metric (I.E.C. Standard) motor mount suitable for .16kW, 1425 REM Frame 7L, V1 construction motor or .32kW, 2850 REM Frame 7L, V1 construction motor. Coupling supplied is for 14mm diameter shaft.
With Control Code 1, Output Code 1
2-115/230V, 60Hz, Capacitor Start, 1/4 HP, Single Phase, TEFC
3-230/460V, 60Hz, (190/380V, 50 Hz), 3-Phase, 1/4 HP TEFC
4-115/230V, 60Hz, Capacitor Start, 1/4 HP, Single Phase, Explosion Proof*
5-230/460V, 60Hz, (190/380V, 50 Hz), 3-Phase 1/4 HP Explosion Proof*
With Control Code 1, Output Code 2
2-115/230V, 60Hz, Capacitor Start, 1/2HP, Single Phase, TEFC
3-230/460V, 60Hz, (190/380V, 50 Hz), 3-Phase, 1/2 HP TEFC
4-115/230V, 60Hz, Capacitor Start, 1/2 HP, Single Phase, Explosion Proof*
5-230/460V, 60Hz, (190/380V, 50 Hz), 3-Phase, 1/2 HP Explosion Proof*
With Control Codes 4, 7, 8, Output Code 1
2-115/230V, 60Hz, Capacitor Start, 1/4 HP, Single Phase, TEFC
3-230/460V, 60Hz, (190/380V, 50 Hz), 3-Phase, 1/4 HP TEFC
With Control Codes 4, 7, 8, Output Code 2
2-115/230V, 60Hz, Capacitor Start, 1/2 HP, Single Phase, TEFC
3-230/460V, 60Hz, (190/380V, 50 Hz), 3-Phase, 1/2 HP TEFC

Liquid End
See next page for complete liquid end specifications & selection.

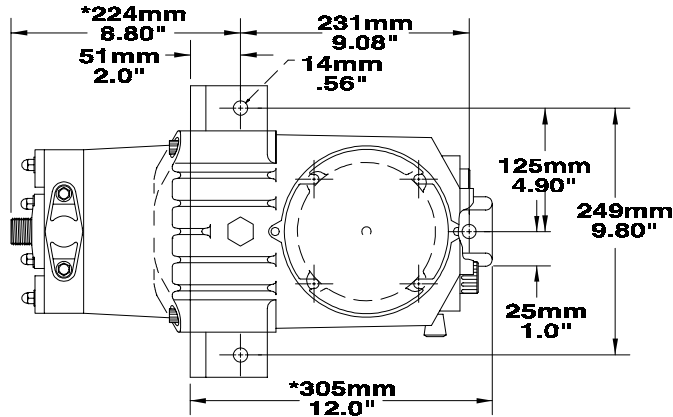
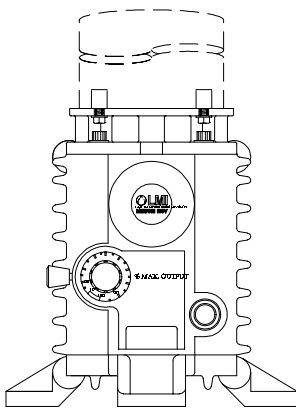
*These explosion proof motors are rated as per the following: U.L. Class 1, Division 1, Group D and U.L. Class 2, Division 1, Groups F & G.

WARNING: A pressure relief valve with a relief pressure of 150 psi max and a relief flow (bleed) rate of at least 4 GPM minimum MUST be installed in the discharge line of all Series L Pumps. Discharge piping should have a minimum burst pressure of 600 psi. Failure to provide pressure relief may result in failure modes dangerous to the system, associated piping and operating personnel.

Output Information

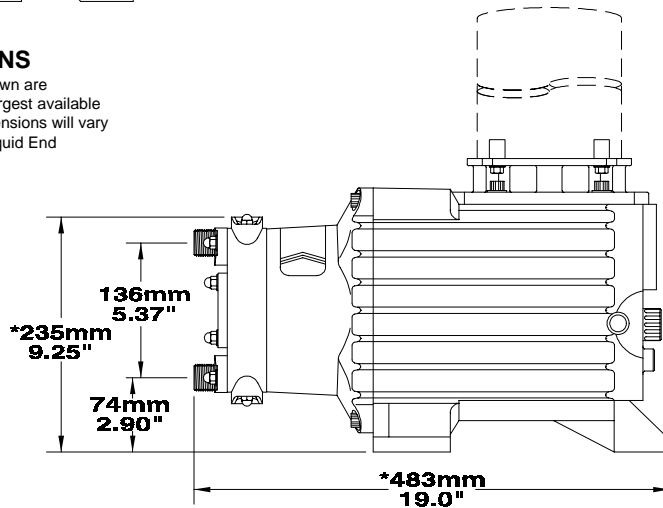
Series	Liters per Hour		Gallons per Hour		mL/cc per minute		mL/cc per Stroke		Maximum Injection Pressure
	MIN	MAX	MIN	MAX	MIN	MAX	MIN	MAX	
L11	13.3	133	3.5	35.0	221.67	221.7	3.08	30.79	8.6 Bar (125 psi)
L12	26.5	265	7.0	70.0	441.67	441.7	3.07	30.67	8.6 Bar (125 psi)
L41,L71,L81	13.3	133	3.5	35.0	221.67	221.7	3.08	30.79	8.6 Bar (125 psi)
L42,L72,L82	26.5	265	7.0	70.0	441.67	441.7	3.07	30.67	8.6 Bar (125 psi)

Specifications



DIMENSIONS

*Dimensions shown are maximums for largest available Liquid End. Dimensions will vary depending on Liquid End selected.



Series	Strokes per Minute (adjustable)		Stroke Length (adjustable) recommended minimum	Average Input Power @ Max Speed	Shipping Weight
	MIN	MAX			
L11	72	72	10%	n/a	57.6 kg (127 lb)
L12	144	144	10%	n/a	57.6 kg (127 lb)
L41, L71, L81	0	72	10%	n/a	57.6 kg (127 lb)
L42, L72, L82	0	144	10%	n/a	57.6 kg (127 lb)

Configuration Data & Materials of Construction

DRIVE ASM.	LIQUID END NO.	SIZE CODE	MATERIALS OF CONSTRUCTION				TUBING & CONNECTIONS
			HEAD & FITTINGS	BALLS	LIQUIFRAM	SEAL RINGS	
A1	40	12.0	Acrylic/PMF	Ceramic	Hypalon®	Hypalon®	Pipe 3/4" NPT M
L	44	12.0	PVC/PVDF	Ceramic	PTFE Face	Viton®	Pipe 3/4" NPT M
Drives	45	12.0	Polypropylene	Ceramic	PTFE Face	PTFE	Pipe 3/4" NPT M



8 Post Office Square • Acton, MA 01720 USA • TEL (508) 263-9800 • FAX (508) 264-9172

a unit of Sundstrand Corporation

